

Violoncello

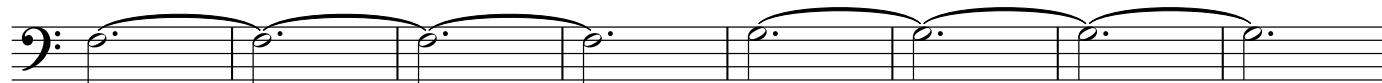
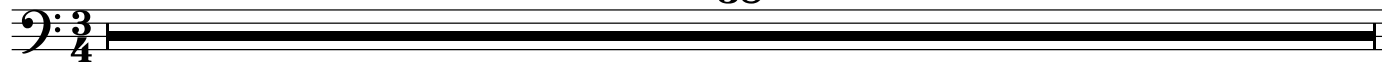
TUNGLIÐ

...AND THEY HAVE ESCAPED THE WEIGHT OF DARKNESS

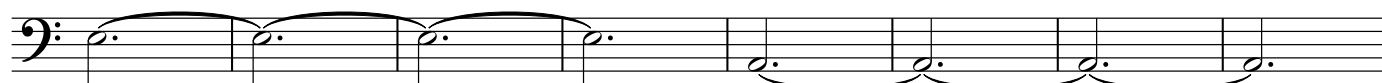
COMPOSED BY ÓLAFUR ARNALDS
TRANSCRIPTION BY ADAM BURGESS

♩ = 105

38



39 *mp*



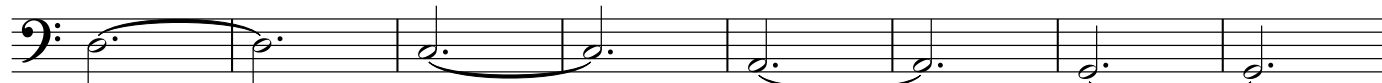
47



55 *mf*



63 *cresc.*



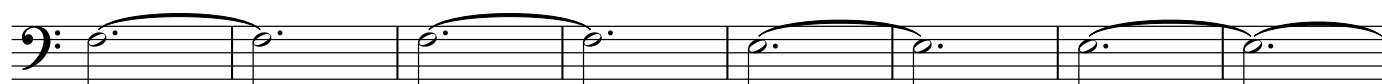
71 *f*



79



87 *ff*



95

103

mp < >

2

< >

119

[illegible]

135

The musical notation for the bass line of 'The Rose Tree' is shown. It consists of a single staff with a bass clef. The notation is divided into two measures, each containing a whole note followed by a half note, with a fermata over the whole note. The first measure is marked with a '2' above the staff, and the second measure is also marked with a '2' above the staff. The notes are G2, A2, B2, and C3. The first measure is marked with a '2' above the staff, and the second measure is also marked with a '2' above the staff. The notes are G2, A2, B2, and C3. The first measure is marked with a '2' above the staff, and the second measure is also marked with a '2' above the staff. The notes are G2, A2, B2, and C3.

143

The musical notation for the bass line of 'The Rose Tree' is shown. It consists of two measures, each containing a whole note followed by a half note, with a fermata over the whole note. The first measure is marked with a '2' above it, and the second measure is also marked with a '2' above it. The notation is in bass clef and includes a double bar line at the end.